

Managing Rhizoctonia in Potatoes

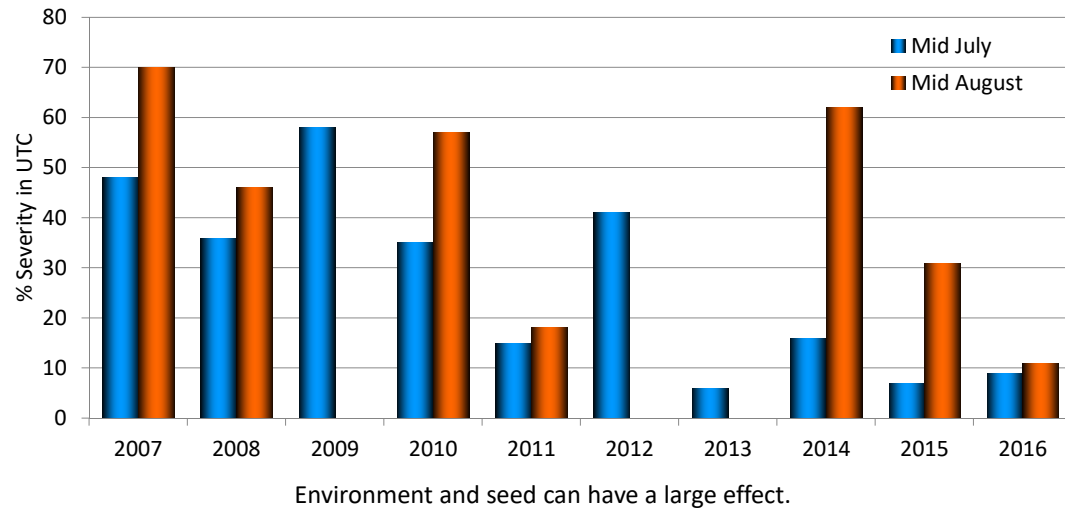


Rhizoctonia Canker and Black Scurf



Effect of Year on Rhizoctonia Severity

Russet Burbank; 3-year rotation; non-inoculated



What is the best fungicide application method?

Seed – Best for treating seed inoculum?

In-furrow – Best for treating soil inoculum?



From Mike Thornton, University of Idaho

Rhizoctonia on June 21



Rhizoctonia Stolon Canker



Severe Stem Rhizoctonia



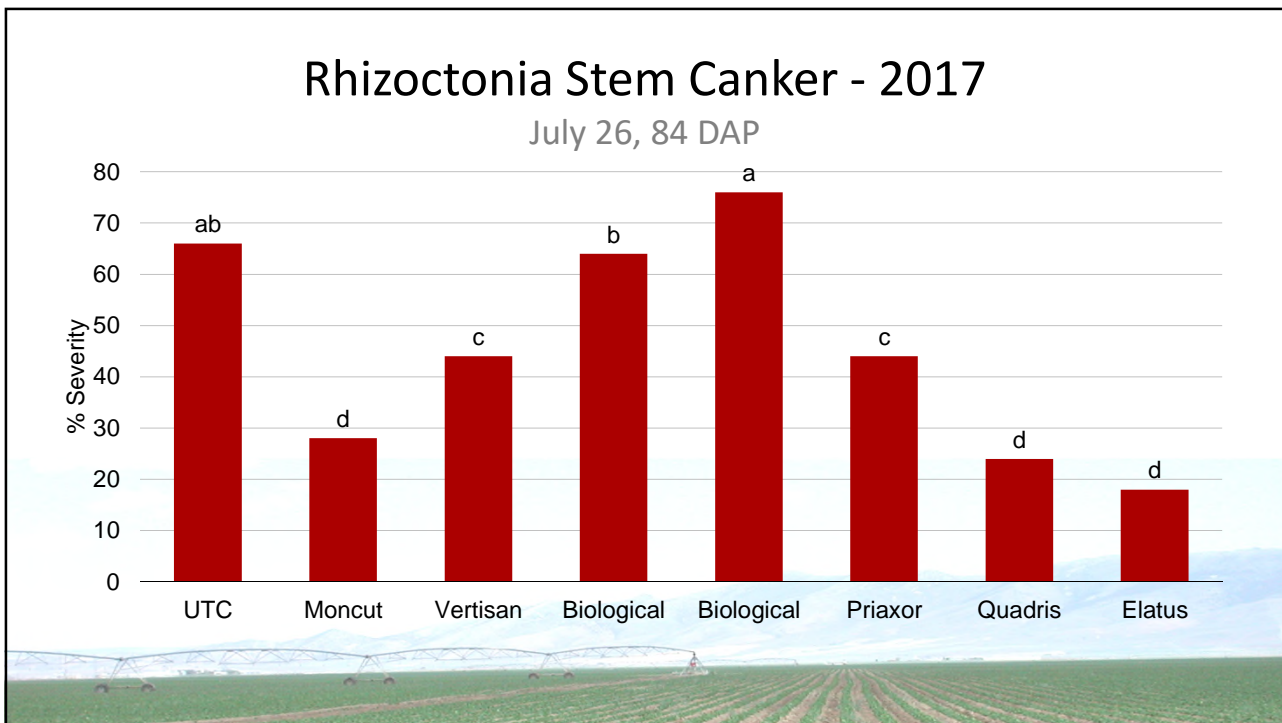
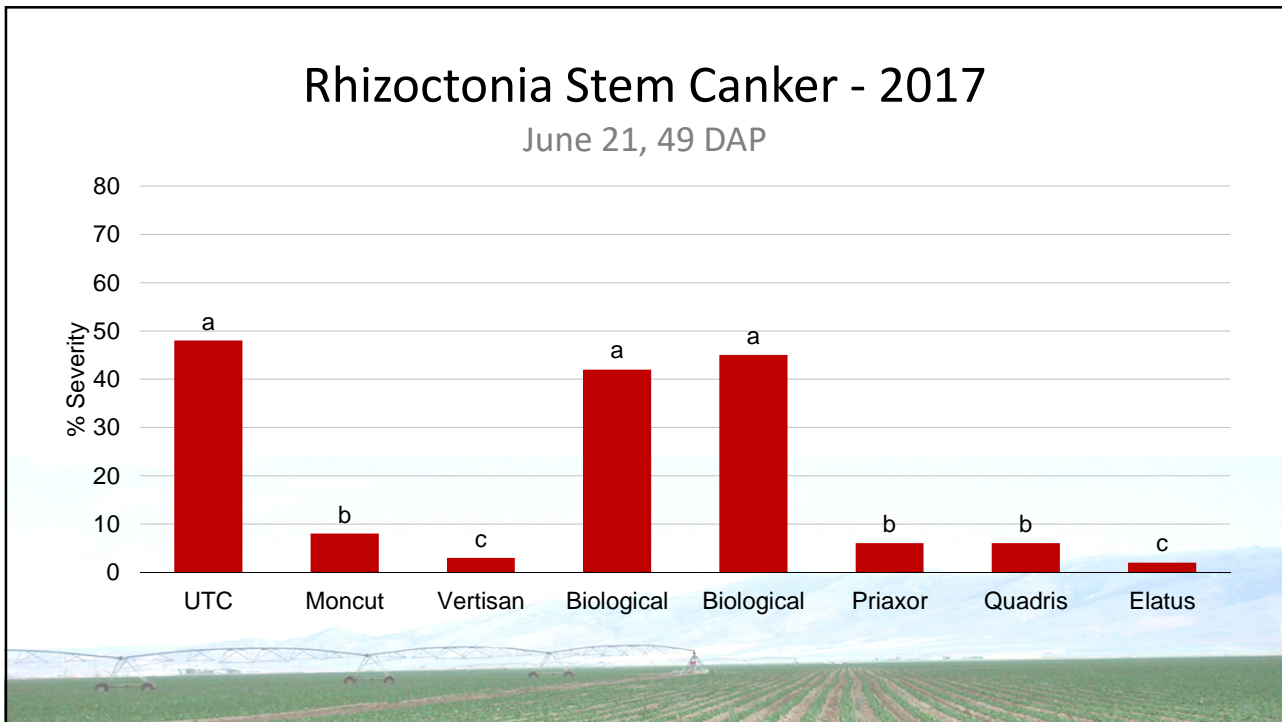
Untreated Check

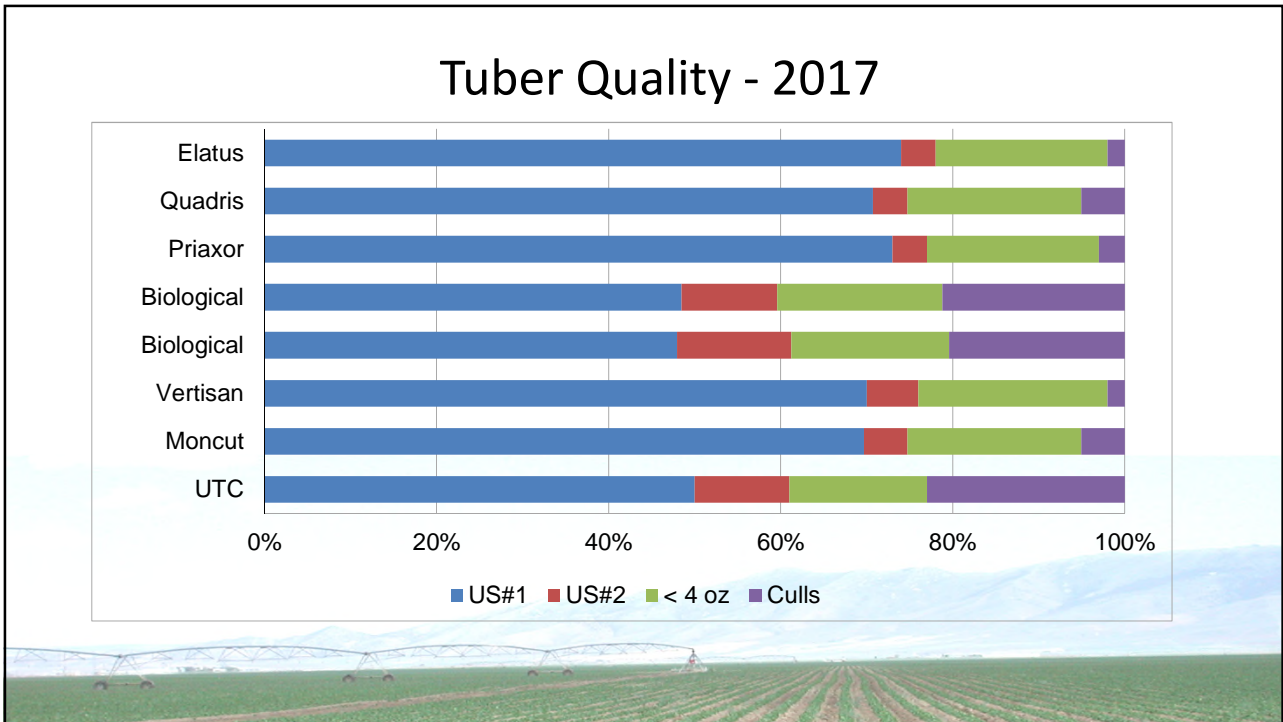
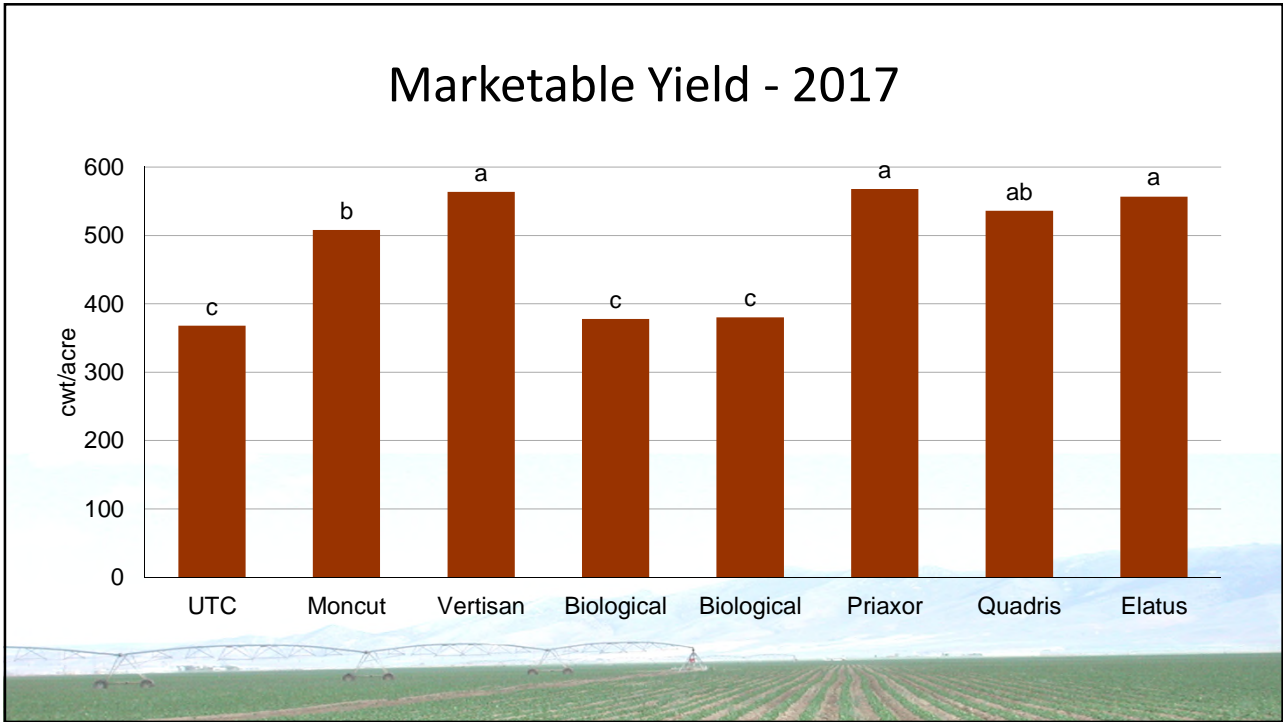
Priaxor, 6.75 fl oz

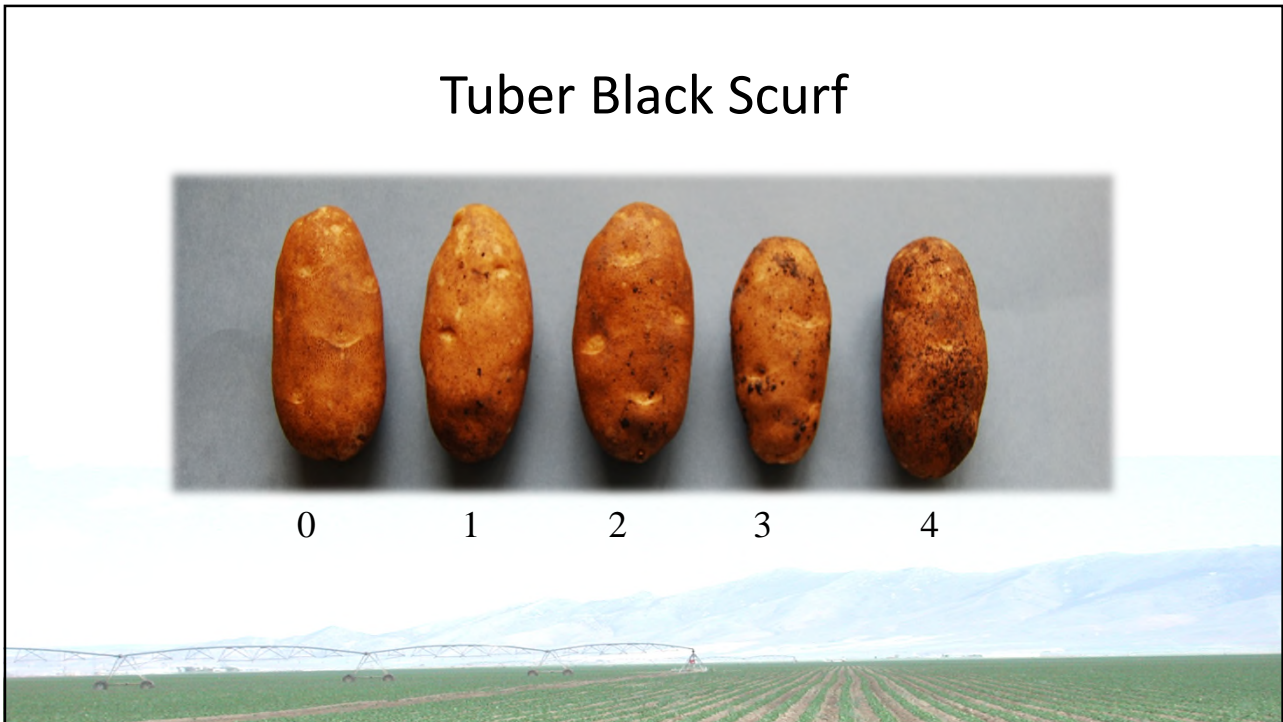
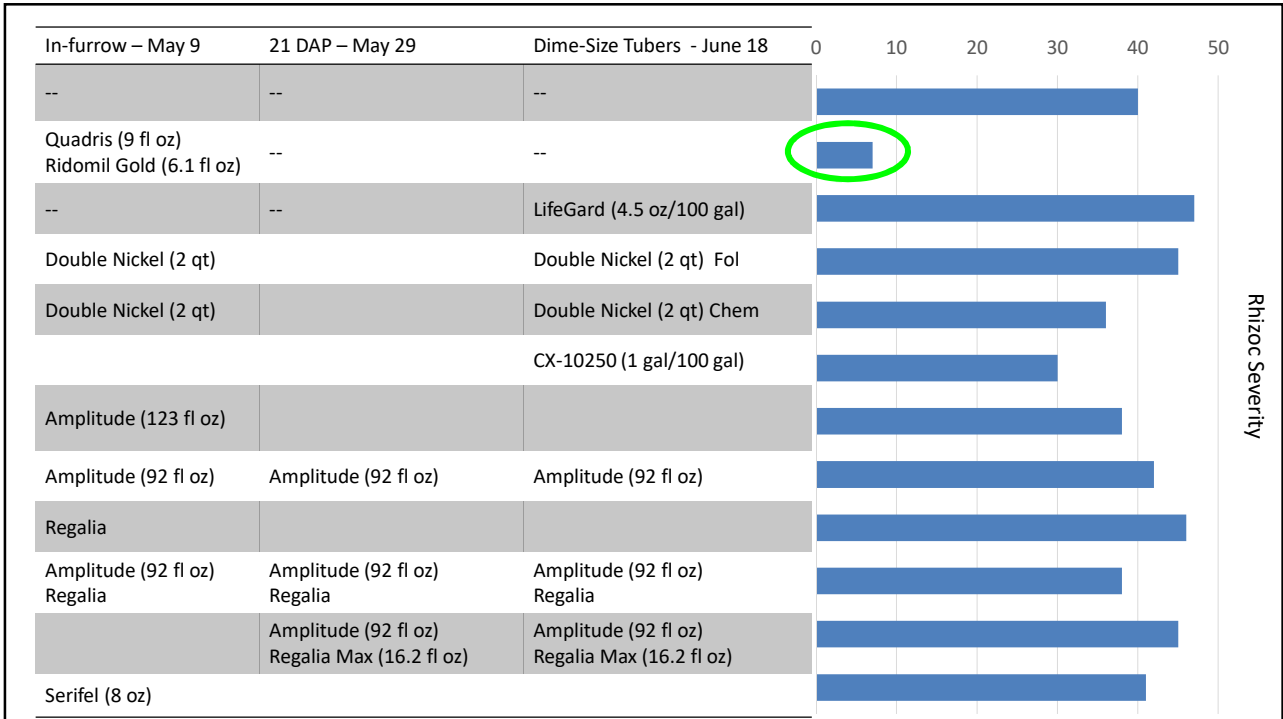
Quadris, 9.2 fl oz

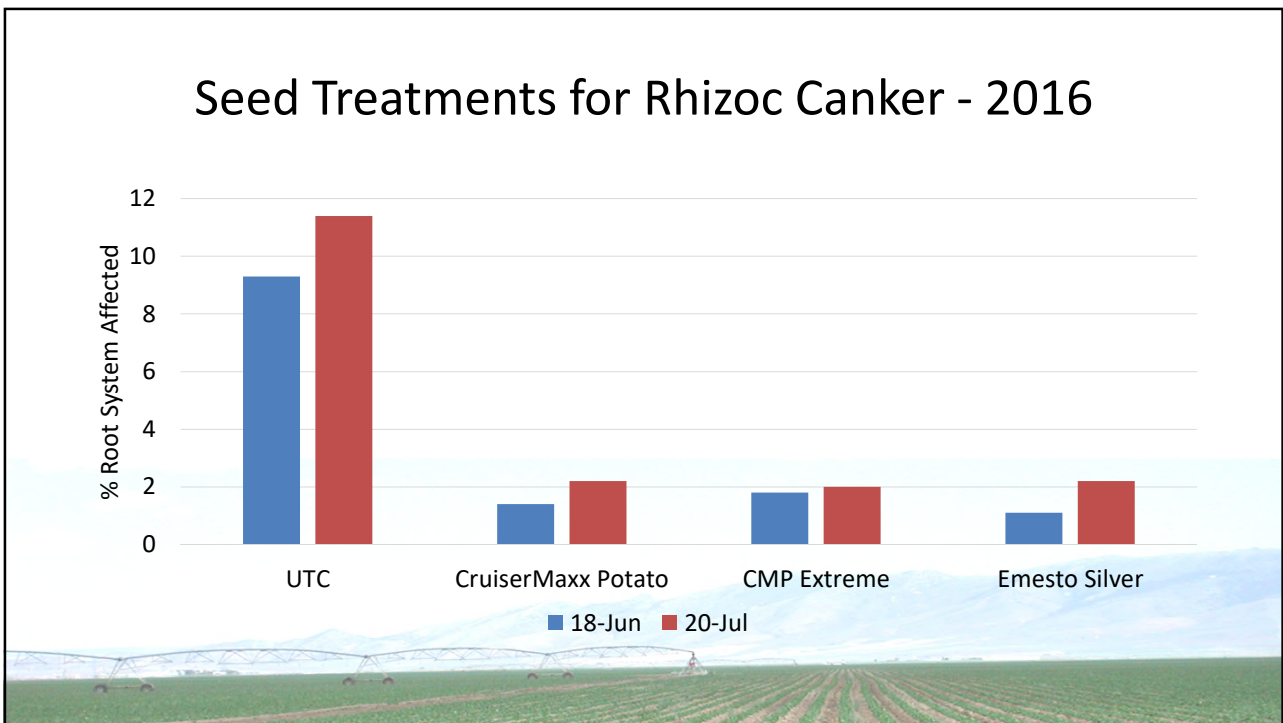
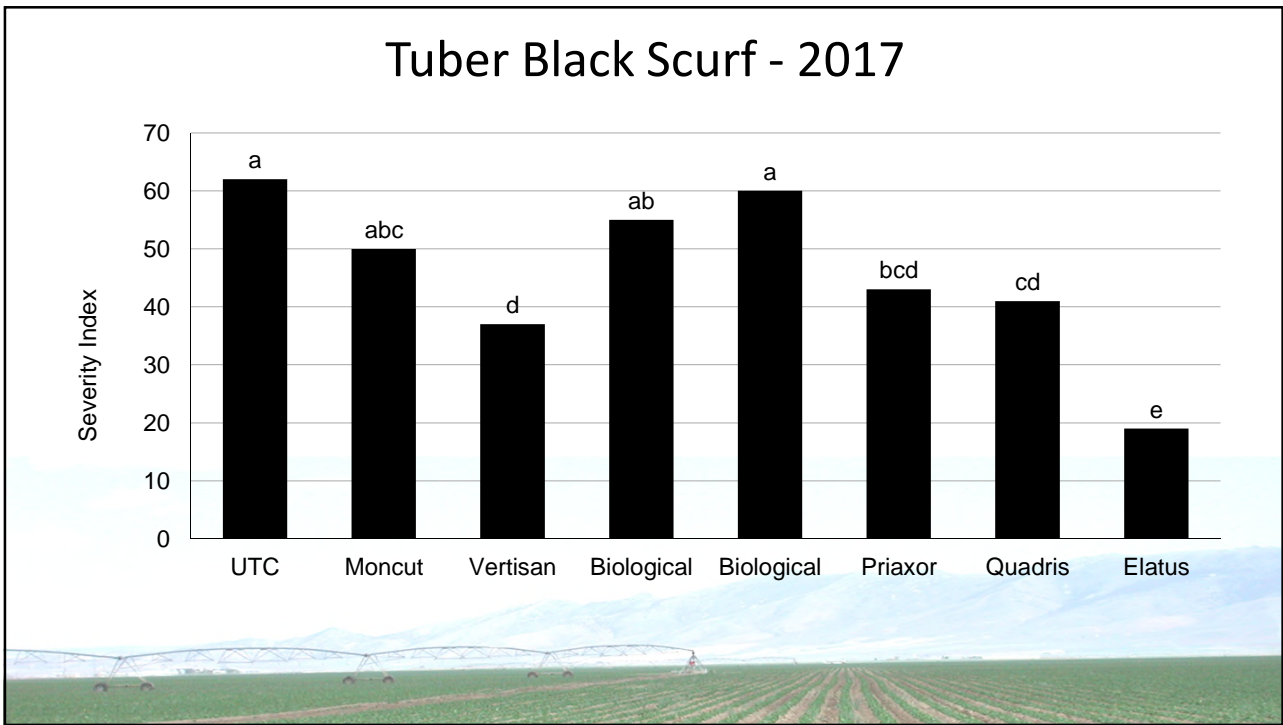
Elatus, 7.7 oz



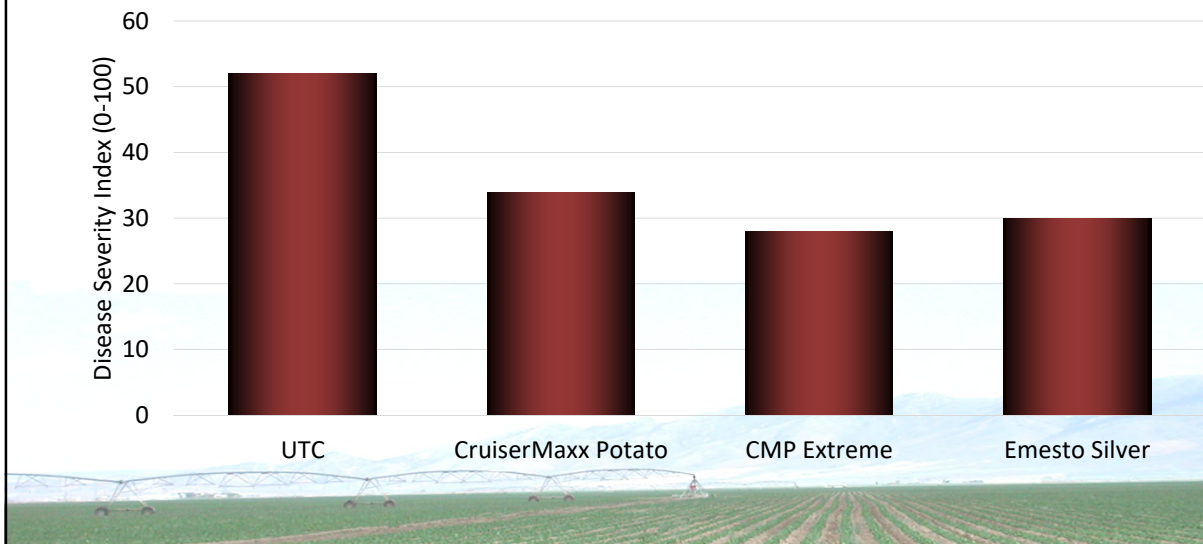








Seed Treatments for Black Scurf



Fungicide Options - Rhizoctonia

Product	Form	M3	Group 12	Group 3	Group 7	Group 11
Maxim MZ	Dust	Mancozeb	Fludioxonil			
Maxim, Spirato, SStartUP FLUDI	Liquid		Fludioxonil			
CruiserMaxx Potato	Liquid		Fludioxonil			
Moncoat MZ	Dust	Mancozeb			Flutolanil	
CruiserMaxx Potato Extreme	Liquid		Fludioxonil	Difenoconazole		
CruiserMaxx Potato Vibrance	Liquid		Fludioxonil	Difenoconazole	Sedaxane	
Emesto Silver	Liquid			Prothioconazole	Penflufen	
Salient	Liquid			Difenoconazole		
Quadris, AZteroid, others	IF					Azoxystrobin
Moncut	IF				Flutolanil	
Elatus	IF				Benzovindiflupyr	Azoxystrobin
Priaxor	IF				Fluxapyroxad	Pyraclostrobin
Vertisan	IF				Penthiopyrad	

Summary

- Rhizoctonia pressure can vary by year.
- In-furrow best for soil borne.
- Seed treat helps with seed borne.
- May want both in severe cases.
- Influence of AGs?
- Biologicals have not performed well under our conditions.



Questions?

